

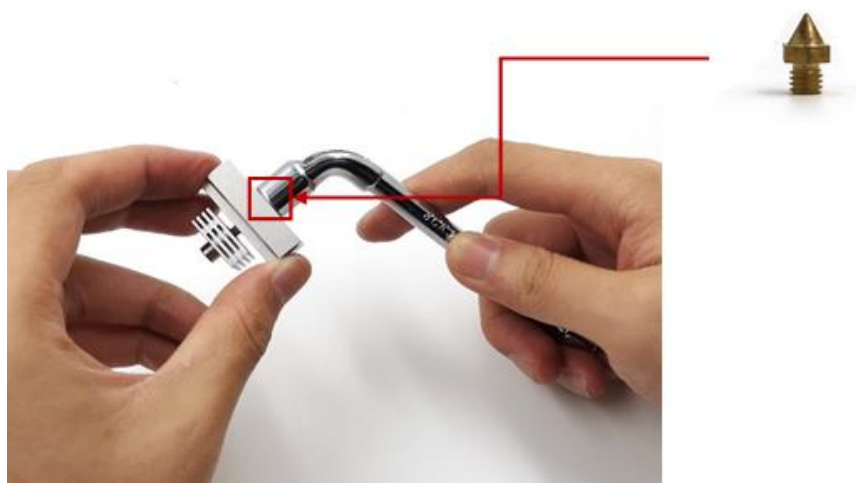
## Pro2 - How to Replace the Nozzle - V1.0

1. First remove the Silicone sleeve from the hotend (If there is a silicone sleeve on the hotend).
  - 1) Use an 8mm socket wrench to remove the old nozzle from the heating block.

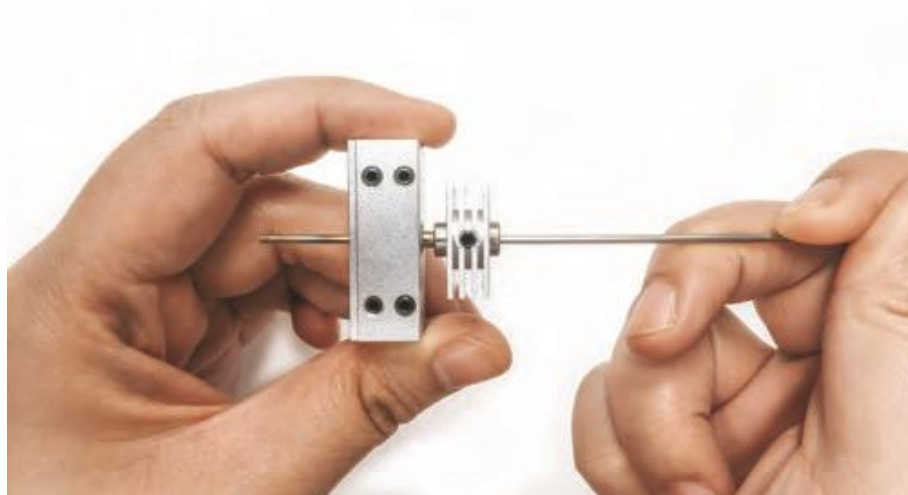
### **Note:**

1. To prevent damage to components of the hotend, DO NOT exert force on the throat tube. Hold the solid section of the heating block during adjustments.

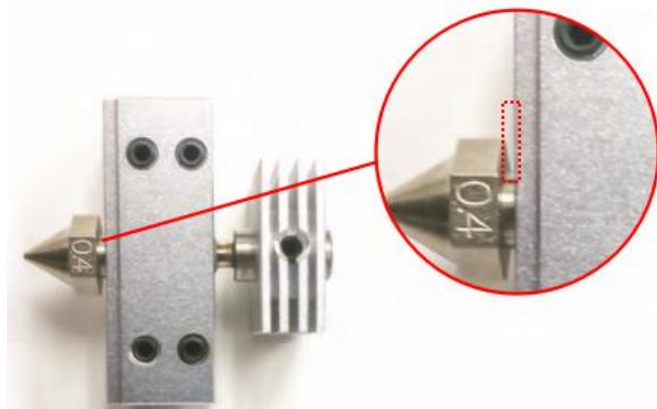
2. Please preheat the hot end if there is filament sealing the nozzle otherwise the nozzle might can't be removed. Use a spatula and tweezers to remove the other filament attached in the nozzle or heating block.



2. Insert a cleaning rod completely through the hotend and ensure that tube is completely clear of blockages.



3. Install the new nozzle into the heating block. Do not tighten it completely. Ensure that there is a visible gap between the nozzle and the heating block.



3. Hold the heating block, and tighten the throat tube by rotating the heat sink. Rotate until the nozzle “catches” on to the tube (begins to spin).

**Note:**

1. The heat sink may be askew when the right position is achieved. This is normal, and will be adjusted in the latter steps.
2. If the heat sink is loose on the throat tube, secure the retaining screw prior to tightening the throat tube.



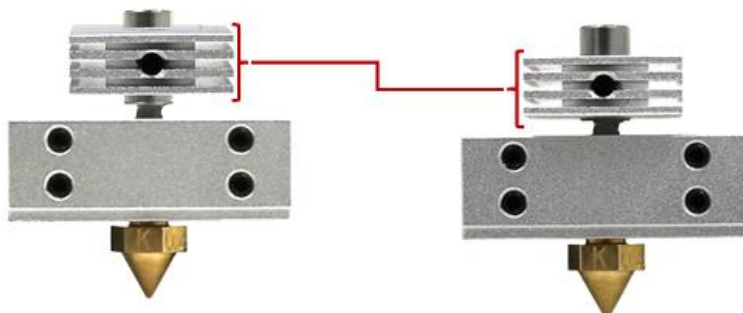
4. Hold the heating block, and tighten the nozzle completely with an 8mm socket wrench. Check that a gap between the nozzle and the heating block has been maintained.



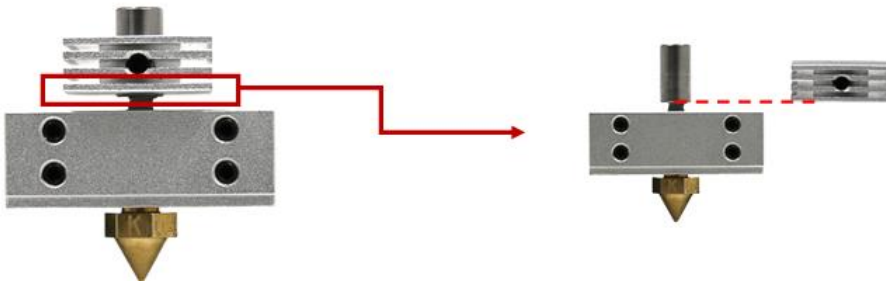
5. Re-attach the silicone sleeve, then loosen the retaining screw on the heat sink. Place the hot end assembly on a flat surface and rotate the heat sink so that the retaining screws face outward.



6. Move the heat sink down so that it rests on the silicone sleeve, and tighten it into place.



7. If you do not have a silicone sleeve, adjust the heat sink so that it is flush with the bottom of the large cylinder.



8. To reinstall the hot end assembly into the extruder head, please refer to Pro2-How to Replace the Hotend.

[ Manual Pro2 Series - How to Replace the Nozzle - V1.0 ]

-END-



America | Asia | Europe

Sales & Business: [sales@raise3d.com](mailto:sales@raise3d.com)

Technical Support: [help.raise3d.com](mailto:help.raise3d.com)

For any other inquiries: [inquiry@raise3d.com](mailto:inquiry@raise3d.com)